



## Certificate of Analysis

Sample: CPK 4743  
 Date Tested: 2/4/2017  
 Test Result UID: ANL20170202B385110 <http://anl360.co/m/656730>  
 WSLCB Tracking: 6033 5611 9000 5708

### Photographs



25x

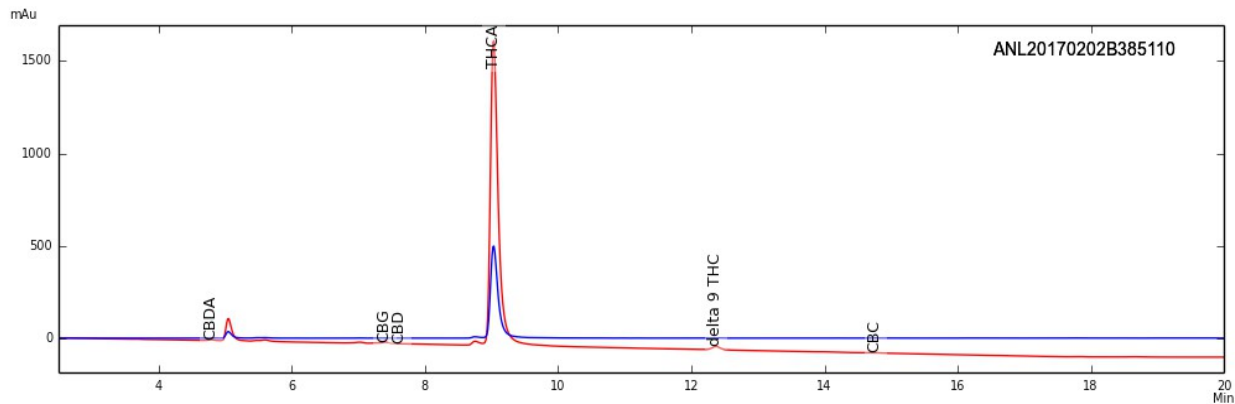


50x



230x

### HPLC Chromatogram



### Cannabinoid Potency

78.63% Delta-9 THC Acid	0.49% CBD-Acid
1.87% Delta-9 THC	0.44% CBD
< 0.01% CBN	0.87% CBD-Total*
0.58% CBG	0.23% CBC
70.83% Total THC (THC-A x (0.877) + THC)*	
72.51% Total Detected Cannabinoids (Total THC + Total CBD + CBN + CBG + CBC)	

\* Total THC & CBD = content adjusted to account for the change in mass due to decarboxylation



## Certificate of Analysis

Sample: CPK 4743  
 Date Tested: 2/4/2017  
 Test Result UID: ANL20170202B385110 <http://anl360.co/m/656730>  
 WSLCB Tracking: 6033 5611 9000 5708

Foreign matter inspection: 0 % PASS

### Microbial screen:

Total aerobic plate count	<25 CFUs/gram	PASS
Total yeast and mold count	<25 CFUs/gram	PASS
Bile-tolerant gram negative bacteria count	<25 CFUs/gram	PASS
Coliforms	<25 CFUs/gram	PASS
E. coli	ND	PASS
Salmonella spp.	ND	PASS

### \*Limits

ND= not detected

### Microbial

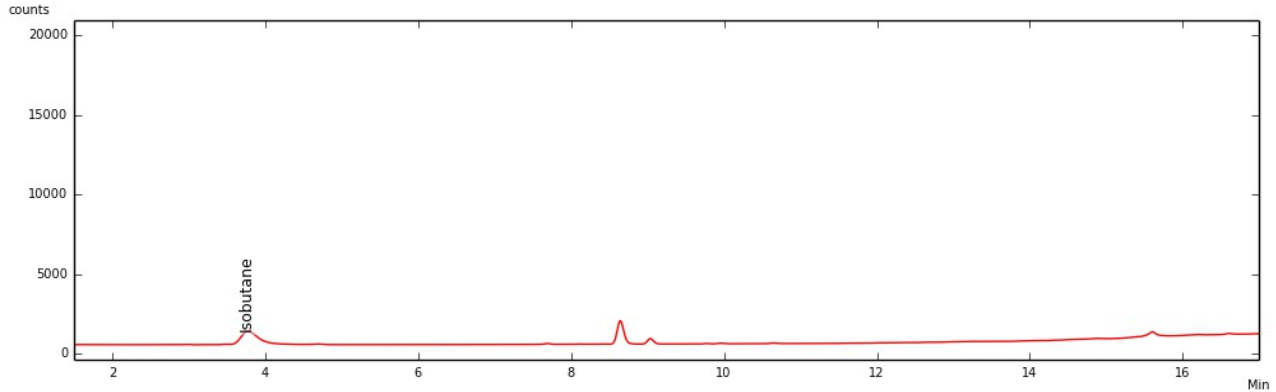
Not to exceed 10,000 Total aerobic plate count, 1,000 Total yeast and mold count, 100 bile-tolerant gram negative bacteria, 100 coliforms, and *E coli* and *Salmonella* not detected in one gram

Approved by: Dr. Lara M Taubner



## Certificate of Analysis – Residual Solvent Analysis

Sample: CPK 4743  
Date Tested: 2/4/2017  
Test Result UID: ANL20170202B385110  
WSLCB Tracking: 6033 5611 9000 5708  
GC Chromatogram



<10 ppm Propane	<10 ppm Pentane
40 ppm Isobutane	<10 ppm Isopropanol
<10 ppm Butane	<10 ppm Hexane
<10 ppm Ethanol	<10 ppm Heptane
<10 ppm Acetone	

**40 TOTAL ppm**

Total Residual Solvents not to exceed 500ppm

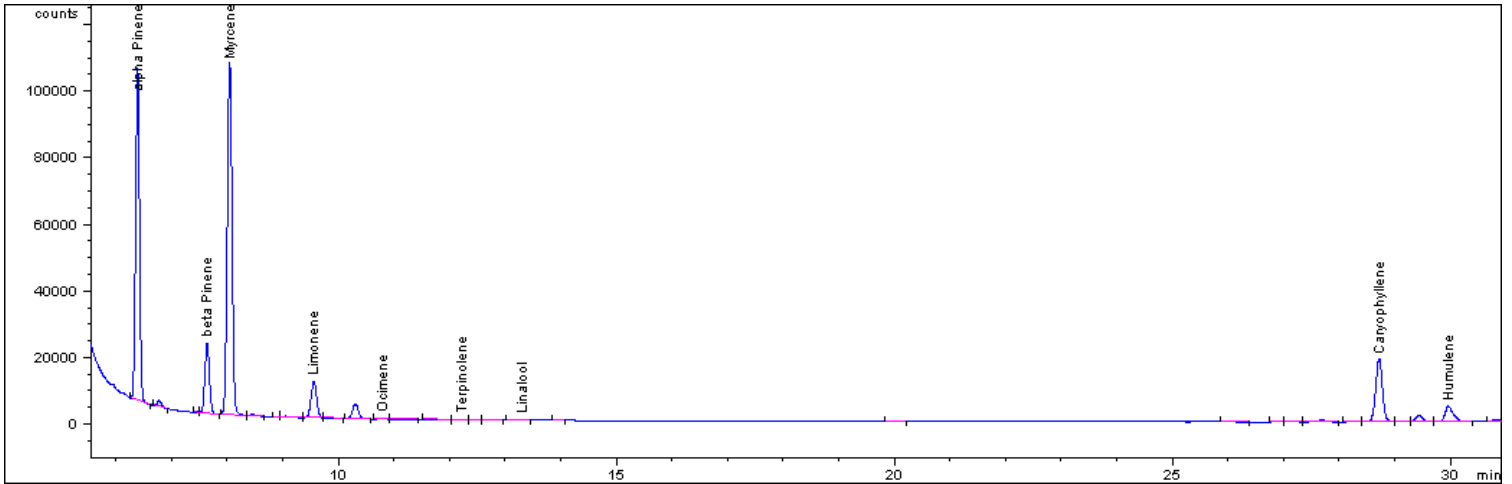
No Hexane or Naphtha may be used in production of concentrates



## Certificate of Analysis

Sample: CPK 4743  
 Date Tested: 2/4/2017  
 Test Result ID: ANL20170202B385110

### GC-FID Chromatogram



	mg/g	%
α-Pinene	2.801	0.280
β-Pinene	0.928	0.093
Myrcene	7.504	0.750
Limonene	0.859	0.086
Ocimene*	0.000	0.000
Terpinolene	0.000	0.000
Linalool	0.474	0.047
Caryophyllene	9.364	0.936
Humulene	3.758	0.376
<b>Total detected</b>	<b>25.687</b>	<b>2.569</b>

\*compound concentration based on beta Pinene  
 Detection limit of 0.05 mg/g

Approved by: Dr. Lara M Taubner