



Certificate of Analysis

Sample: Purple Kush 2349
 Date Tested: 2/13/2017
 Test Result UID: ANL20170213A385582 <http://anl360.co/m/661526>
 WSLCB Tracking: 6033 5611 9000 6084

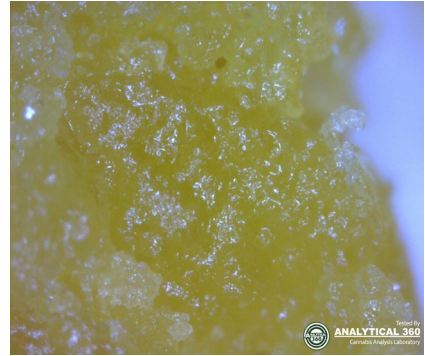
Photographs



25x

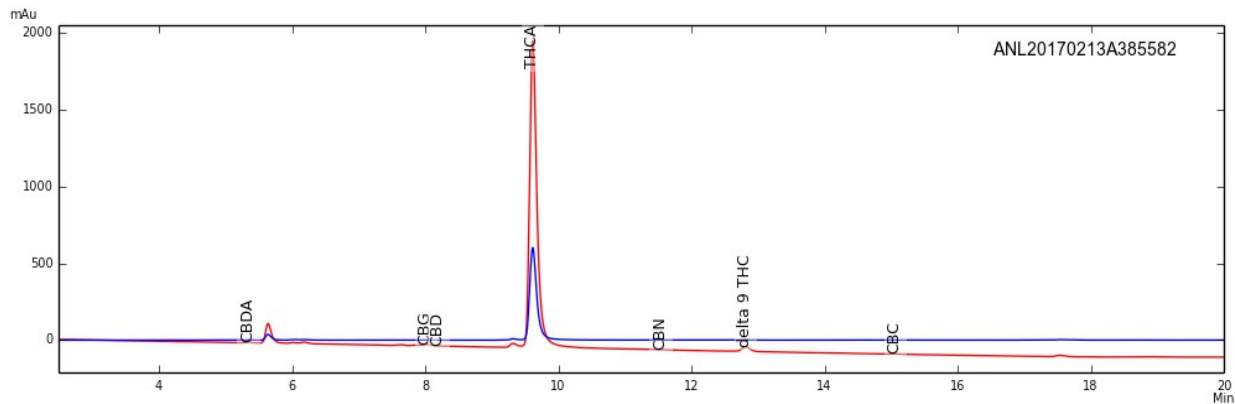


50x



230x

HPLC Chromatogram



Cannabinoid Potency

80.19% Delta-9 THC Acid	0.47% CBD-Acid
2.86% Delta-9 THC	0.45% CBD
0.11% CBN	0.86% CBD-Total*
0.71% CBG	0.21% CBC
73.19% Total THC (THC-A x (0.877) + THC)*	
75.08% Total Detected Cannabinoids (Total THC + Total CBD + CBN + CBG + CBC)	

* Total THC & CBD = content adjusted to account for the change in mass due to decarboxylation



Certificate of Analysis

Sample: Purple Kush 2349
 Date Tested: 2/13/2017
 Test Result UID: ANL20170213A385582 <http://anl360.co/m/661526>
 WSLCB Tracking: 6033 5611 9000 6084

Foreign matter inspection: 0 % PASS

Microbial screen:

Total aerobic plate count	<25 CFUs/gram	PASS
Total yeast and mold count	410 CFUs/gram	PASS
Bile-tolerant gram negative bacteria count	<25 CFUs/gram	PASS
Coliforms	<25 CFUs/gram	PASS
E. coli	ND	PASS
Salmonella spp.	ND	PASS

*Limits

ND= not detected

Microbial

Not to exceed 10,000 Total aerobic plate count, 1,000 Total yeast and mold count, 100 bile-tolerant gram negative bacteria, 100 coliforms, and *E coli* and *Salmonella* not detected in one gram

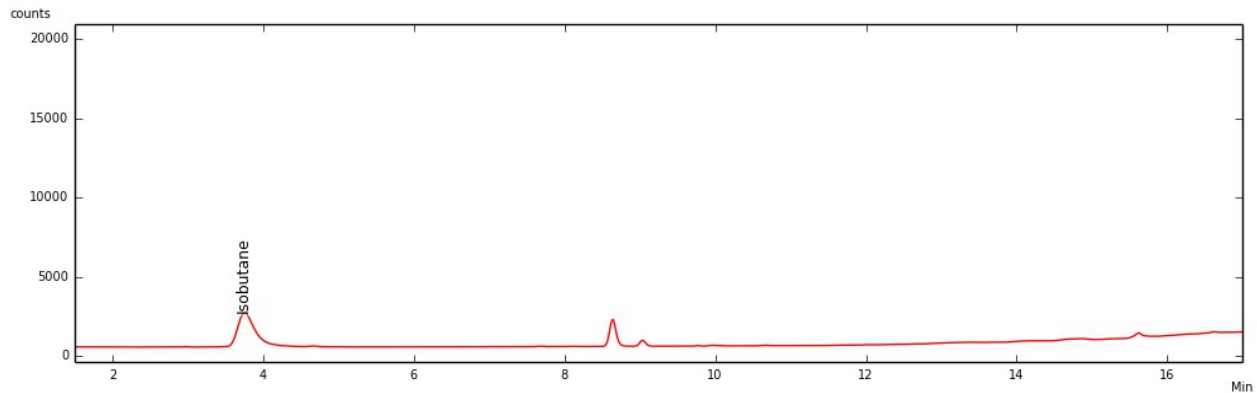
Approved by: Dr. Paul Matthews



Certificate of Analysis – Residual Solvent Analysis

Sample: Purple Kush 2349
Date Tested: 2/13/2017
Test Result UID: ANL20170213A385582
WSLCB Tracking: 6033 5611 9000 6084

GC Chromatogram



<10 ppm Propane	<10 ppm Pentane
100 ppm Isobutane	<10 ppm Isopropanol
<10 ppm Butane	<10 ppm Hexane
<10 ppm Ethanol	<10 ppm Heptane
<10 ppm Acetone	

100 TOTAL ppm

Total Residual Solvents not to exceed 500ppm

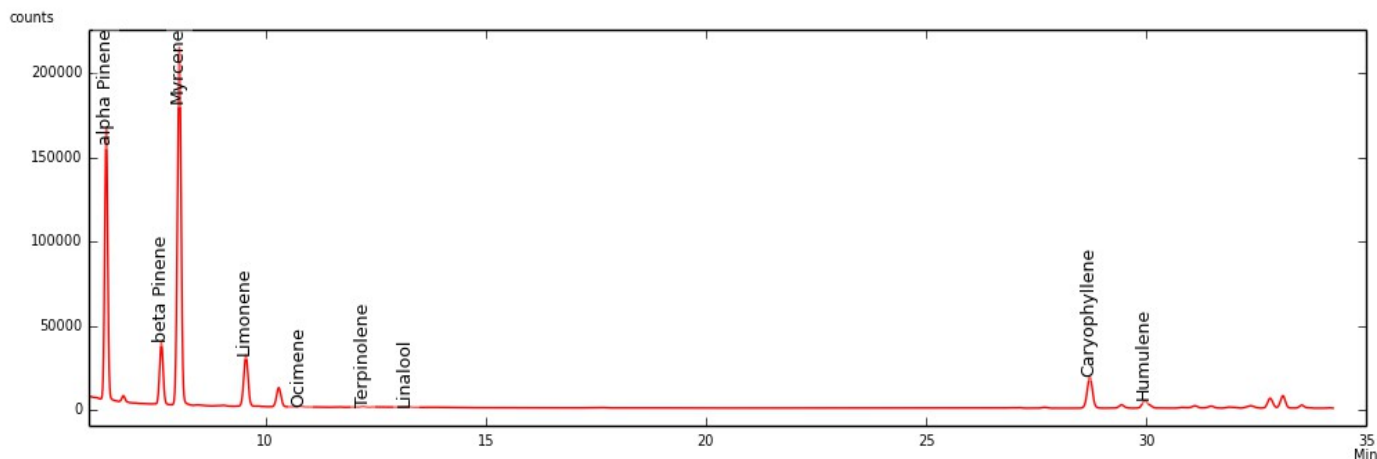
No Hexane or Naphtha may be used in production of concentrates



Certificate of Analysis

Sample: Purple Kush 2349
Date Tested: 2/13/2017
Test Result ID: ANL20170213A385582

GC-FID Chromatogram



	mg/g	%
α -Pinene	4.726	0.473
β -Pinene	1.712	0.171
Myrcene	15.661	1.566
Limonene	2.441	0.244
Ocimene*	0.000	0.000
Terpinolene	0.001	0.000
Linalool	0.951	0.095
Caryophyllene	9.551	0.955
Humulene	3.856	0.386
Total detected	38.899	3.890

*compound concentration based on beta Pinene
Detection limit of 0.05 mg/g

Approved by: Dr. Paul Matthews