



Certificate of Analysis

Sample: Chernobyl
 Date Tested: 6/9/2016
 Test Result UID: ANL20160609D274239 <http://anl360.co/m/553143>
 WSLCB Tracking: 6033 5669 3000 5187

Photographs



25x

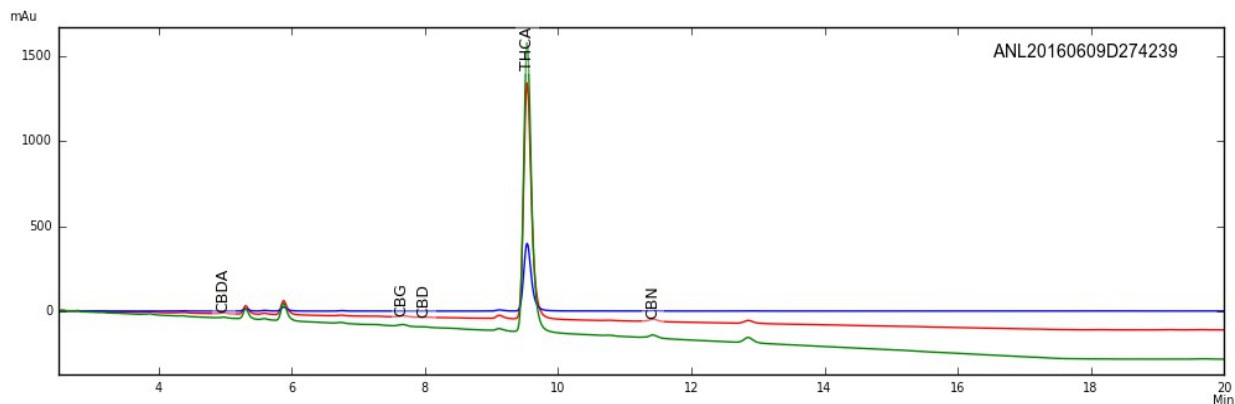


50x



230x

HPLC Chromatogram



Cannabinoid Potency

16.91% Delta-9 THC Acid	0.06% CBD-Acid
0.45% Delta-9 THC	0.07% CBD
0.10% CBN	0.12% CBD-Total*
0.17% CBG	0.05% CBC
15.28% Total THC (THC-A x (0.877) + THC)*	

* Total THC & CBD = content adjusted to account for the change in mass due to decarboxylation



Certificate of Analysis

Sample: Chernobyl
 Date Tested: 6/9/2016
 Test Result UID: ANL20160609D274239 <http://anl360.co/m/553143>
 WSLCB Tracking: 6033 5669 3000 5187

Foreign matter inspection:	0 %	PASS
Moisture content:	9.41%	PASS
Microbial screen:		
Total aerobic plate count	<25 CFUs/gram	PASS
Total yeast and mold count	25,750 CFUs/gram	FAIL
Bile-tolerant gram negative bacteria count	<25 CFUs/gram	PASS
Coliforms	<25 CFUs/gram	PASS
E. coli	ND	PASS
Salmonella spp.	ND	PASS

*Limits

ND= not detected

Foreign matter not more than 5.0 % of stems 3 mm or more in diameter; not more than 2.0 % of other foreign matter

Not more than 15 % moisture

Microbial

Not to exceed 100,000 Total aerobic plate count, 10,000 Total yeast and mold count, 1,000 bile-tolerant gram negative bacteria, 1,000 coliforms, and *E coli* and *Salmonella* not detected in one gram

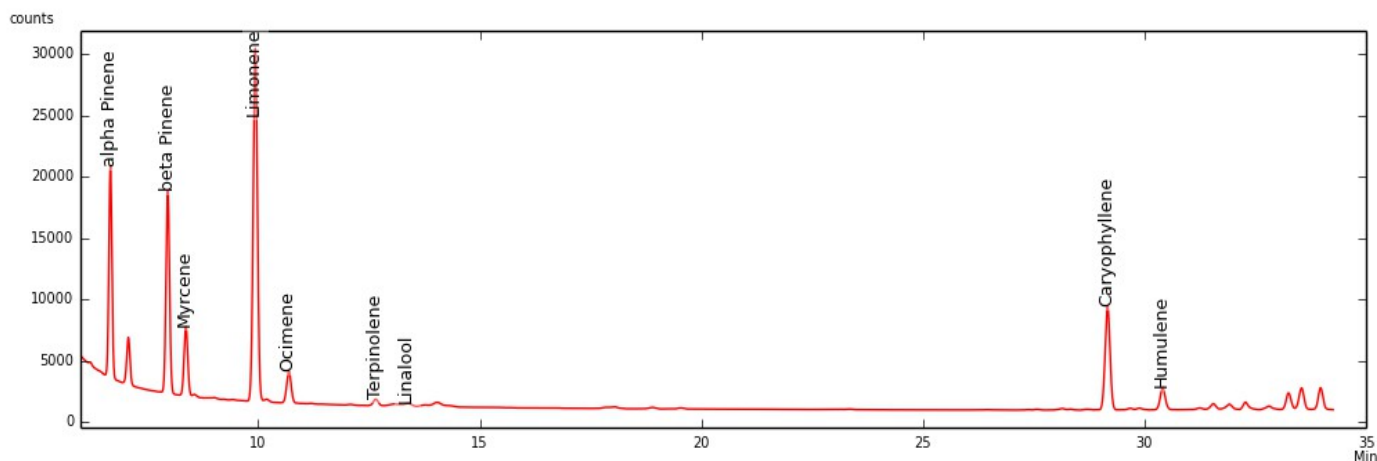
Approved by: Dr. Lara M Taubner



Certificate of Analysis

Sample: Chernobyl
Date Tested: 6/9/2016
Test Result ID: ANL20160609D274239

GC-FID Chromatogram



	mg/g	%
α -Pinene	0.594	0.059
β -Pinene	0.962	0.096
Myrcene	0.379	0.038
Limonene	2.515	0.251
Ocimene*	0.184	0.018
Terpinolene	0.000	0.000
Linalool	1.403	0.140
Caryophyllene	3.809	0.381
Humulene	1.188	0.119
Total detected	11.034	1.103

* compound concentration based on beta Pinene
Detection limit of 0.05 mg/g

Approved by: Dr. Lara M Taubner