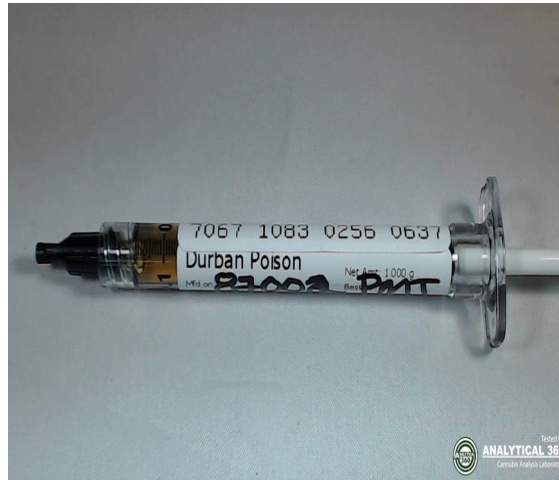




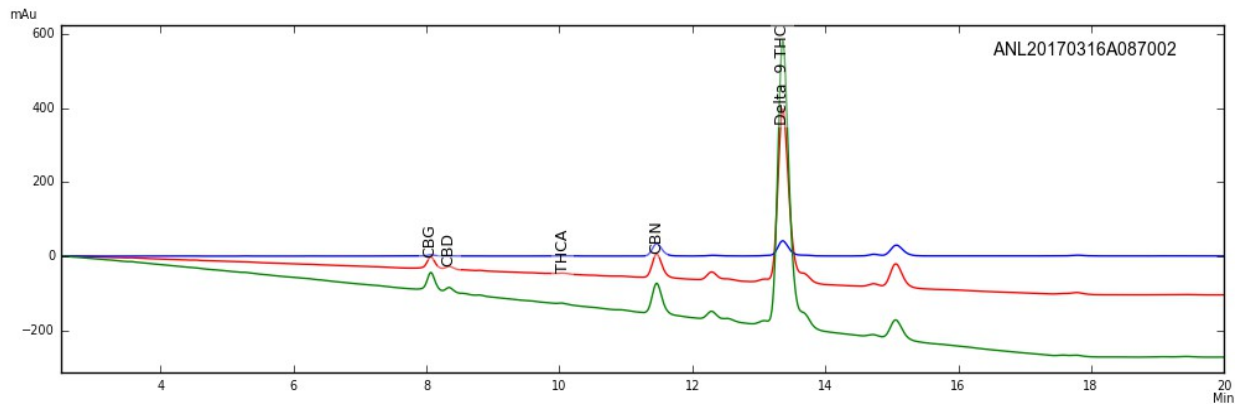
## Certificate of Analysis

Sample: Durban Poison 0637  
 Date Tested: 3/17/2017  
 Test Result UID: ANL20170316A087002 <http://anl360.co/m/675405>  
 WSLCB Tracking: 6032 6761 5000 1280

### Photographs



### HPLC Chromatogram



### Cannabinoid Potency

0.19%	Delta-9 THC Acid	< 0.01%	CBD-Acid
70.19%	Delta-9 THC	1.01%	CBD
3.39%	CBN	1.01%	CBD-Total*
3.38%	CBG	< 0.01%	CBC
70.36%	Total THC (THC-A x (0.877) + THC)*		
78.13%	Total Detected Cannabinoids (Total THC + Total CBD + CBN + CBG + CBC)		

\* Total THC & CBD = content adjusted to account for the change in mass due to decarboxylation



## Certificate of Analysis

Sample: Durban Poison 0637  
 Date Tested: 3/17/2017  
 Test Result UID: ANL20170316A087002 <http://anl360.co/m/675405>  
 WSLCB Tracking: 6032 6761 5000 1280

Foreign matter inspection: 0 % PASS

### Microbial screen:

Total aerobic plate count	<25 CFUs/gram	PASS
Total yeast and mold count	<25 CFUs/gram	PASS
Bile-tolerant gram negative bacteria count	<25 CFUs/gram	PASS
Coliforms	<25 CFUs/gram	PASS
E. coli	ND	PASS
Salmonella spp.	ND	PASS

### \*Limits

ND= not detected

### Microbial

Not to exceed 10,000 Total aerobic plate count, 1,000 Total yeast and mold count, 100 bile-tolerant gram negative bacteria, 100 coliforms, and *E coli* and *Salmonella* not detected in one gram

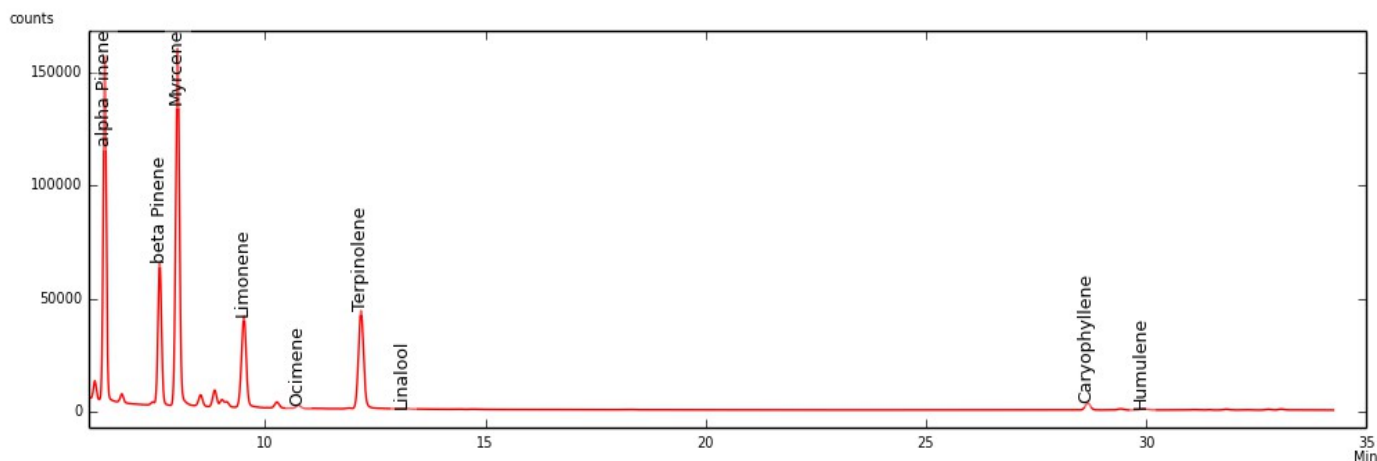
Approved by: Dr. Paul Matthews



## Certificate of Analysis

Sample: Durban Poison 0637  
Date Tested: 3/17/2017  
Test Result ID: ANL20170316A087002

### GC-FID Chromatogram



	mg/g	%
$\alpha$ -Pinene	6.233	0.623
$\beta$ -Pinene	4.164	0.416
Myrcene	16.644	1.664
Limonene	5.032	0.503
Ocimene*	0.067	0.007
Terpinolene	9.644	0.964
Linalool	0.310	0.031
Caryophyllene	2.228	0.223
Humulene	0.780	0.078
Total detected	45.104	4.510

\*compound concentration based on beta Pinene  
Detection limit of 0.05 mg/g

Approved by: Dr. Paul Matthews