



Certificate of Analysis

Sample: Blue Cheese 0096
 Date Tested: 6/5/2017
 Test Result UID: ANL20170605C090099 <http://anl360.co/m/705878>
 WSLCB Tracking: 6034 9007 0000 0304

Photographs



25x

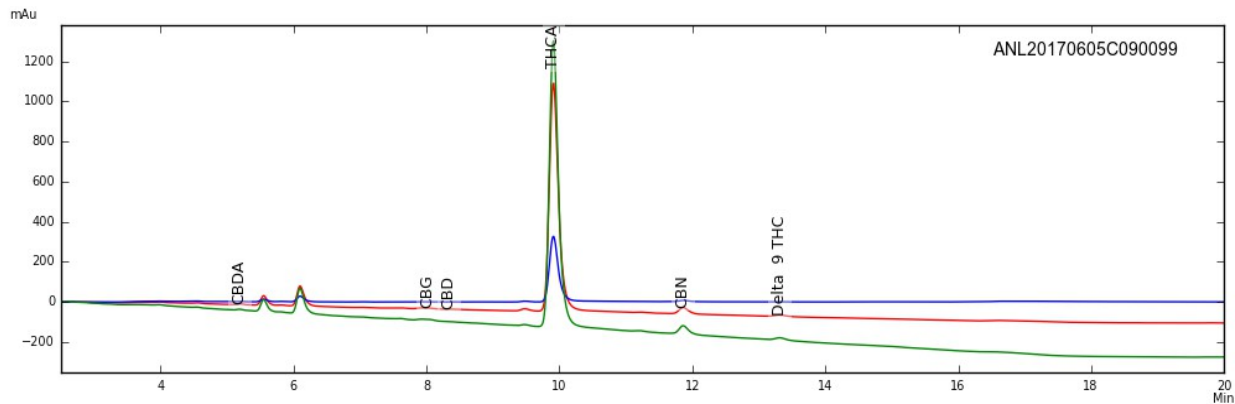


50x



230x

HPLC Chromatogram



Cannabinoid Potency

19.91%	Delta-9 THC Acid	0.04%	CBD-Acid
0.31%	Delta-9 THC	0.08%	CBD
0.40%	CBN	0.12%	CBD-Total*
0.15%	CBG	< 0.01%	CBC
17.77%	Total THC (THC-A x (0.877) + THC)*		
18.44%	Total Detected Cannabinoids (Total THC + Total CBD + CBN + CBG + CBC)		

* Total THC & CBD = content adjusted to account for the change in mass due to decarboxylation



Certificate of Analysis

Sample: Blue Cheese 0096
 Date Tested: 6/5/2017
 Test Result UID: ANL20170605C090099 <http://anl360.co/m/705878>
 WSLCB Tracking: 6034 9007 0000 0304

Foreign matter inspection:	0 %	PASS
Moisture content:	12.10%	PASS
Microbial screen:		
Total aerobic plate count	<25 CFUs/gram	PASS
Total yeast and mold count	<25 CFUs/gram	PASS
Bile-tolerant gram negative bacteria count	<25 CFUs/gram	PASS
Coliforms	<25 CFUs/gram	PASS
E. coli	ND	PASS
Salmonella spp.	ND	PASS

*Limits

ND= not detected

Foreign matter not more than 5.0 % of stems 3 mm or more in diameter; not more than 2.0 % of other foreign matter

Not more than 15 % moisture

Microbial

Not to exceed 100,000 Total aerobic plate count, 10,000 Total yeast and mold count, 1,000 bile-tolerant gram negative bacteria, 1,000 coliforms, and *E coli* and *Salmonella* not detected in one gram

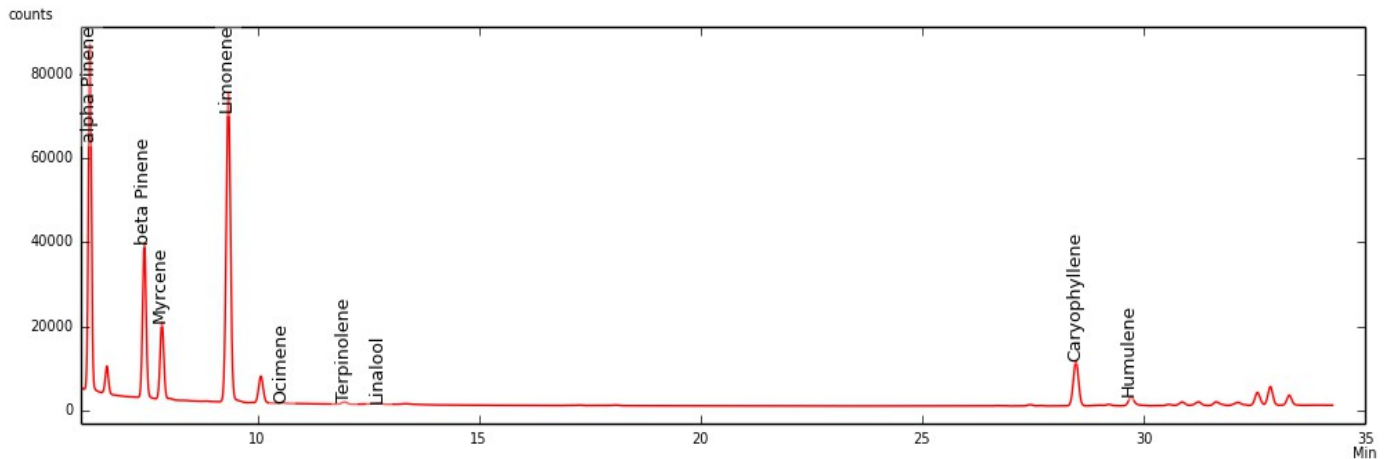
Approved by: Dr. Paul Matthews



Certificate of Analysis

Sample: Blue Cheese 0096
Date Tested: 6/5/2017
Test Result ID: ANL20170605C090099

GC-FID Chromatogram



	mg/g	%
α-Pinene	2.753	0.275
β-Pinene	1.974	0.197
Myrcene	1.510	0.151
Limonene	6.815	0.682
Ocimene*	0.000	0.000
Terpinolene	0.019	0.002
Linalool	1.339	0.134
Caryophyllene	6.227	0.623
Humulene	1.907	0.191
Total detected	22.544	2.254

*compound concentration based on beta Pinene
Detection limit of 0.05 mg/g

Approved by: Dr. Paul Matthews