



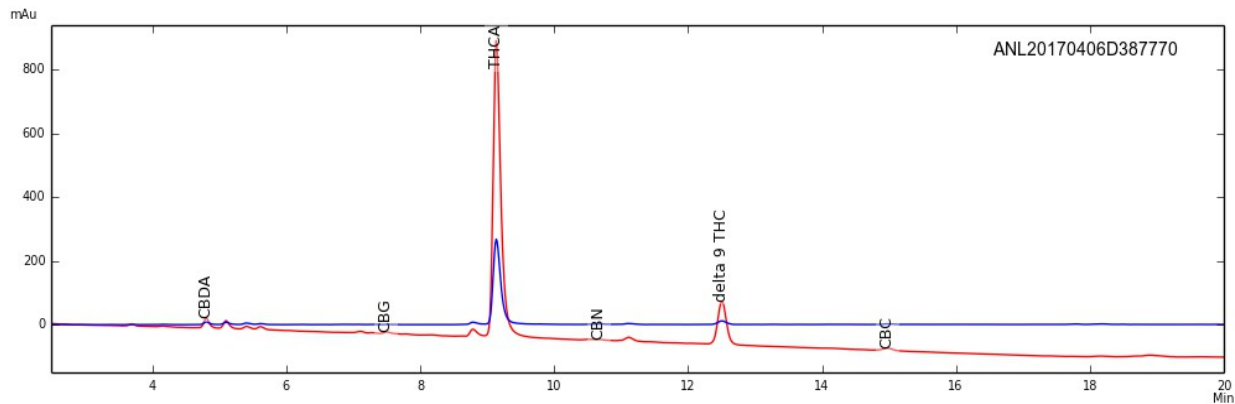
Certificate of Analysis

Sample: Cheese Candy 4309
 Date Tested: 4/7/2017
 Test Result UID: ANL20170406D387770 <http://anl360.co/m/682933>
 WSLCB Tracking: 6040 1576 6000 0240

Photographs



HPLC Chromatogram



Cannabinoid Potency

41.72%	Delta-9 THC Acid	1.17%	CBD-Acid
14.14%	Delta-9 THC	< 0.01%	CBD
0.41%	CBN	1.03%	CBD-Total*
0.57%	CBG	0.51%	CBC
50.73%	Total THC (THC-A x (0.877) + THC)*		
53.24%	Total Detected Cannabinoids (Total THC + Total CBD + CBN + CBG + CBC)		

* Total THC & CBD = content adjusted to account for the change in mass due to decarboxylation



Certificate of Analysis

Sample: Cheese Candy 4309
 Date Tested: 4/7/2017
 Test Result UID: ANL20170406D387770 <http://anl360.co/m/682933>
 WSLCB Tracking: 6040 1576 6000 0240

Foreign matter inspection: 0 % PASS

Microbial screen:

Total aerobic plate count	<25 CFUs/gram	PASS
Total yeast and mold count	<25 CFUs/gram	PASS
Bile-tolerant gram negative bacteria count	<25 CFUs/gram	PASS
Coliforms	<25 CFUs/gram	PASS
E. coli	ND	PASS
Salmonella spp.	ND	PASS

*Limits

ND= not detected

Microbial

Not to exceed 10,000 Total aerobic plate count, 1,000 Total yeast and mold count, 100 bile-tolerant gram negative bacteria, 100 coliforms, and *E coli* and *Salmonella* not detected in one gram

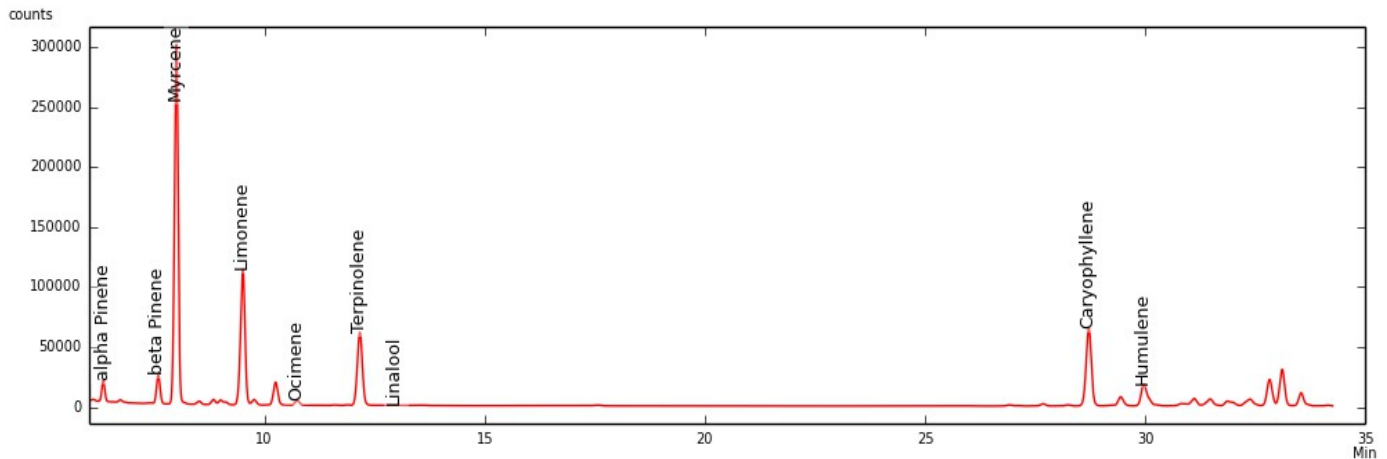
Approved by: Dr. Paul Matthews



Certificate of Analysis

Sample: Cheese Candy 4309
Date Tested: 4/7/2017
Test Result ID: ANL20170406D387770

GC-FID Chromatogram



	mg/g	%
α-Pinene	0.450	0.045
β-Pinene	1.011	0.101
Myrcene	20.430	2.043
Limonene	8.771	0.877
Ocimene*	0.191	0.019
Terpinolene	8.707	0.871
Linalool	1.265	0.127
Caryophyllene	30.789	3.079
Humulene	14.188	1.419
Total detected	85.802	8.580

* compound concentration based on beta Pinene
Detection limit of 0.05 mg/g

Approved by: Dr. Paul Matthews