



## Certificate of Analysis

Sample: Cookies-N-Kush 6036  
 Date Tested: 2/20/2017  
 Test Result UID: ANL20170217E485867 <http://anl360.co/m/663150>  
 WSLCB Tracking: 6033 5611 9000 6195

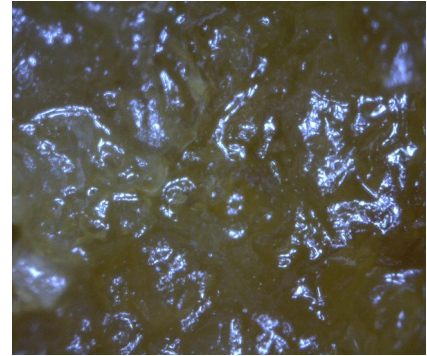
### Photographs



25x

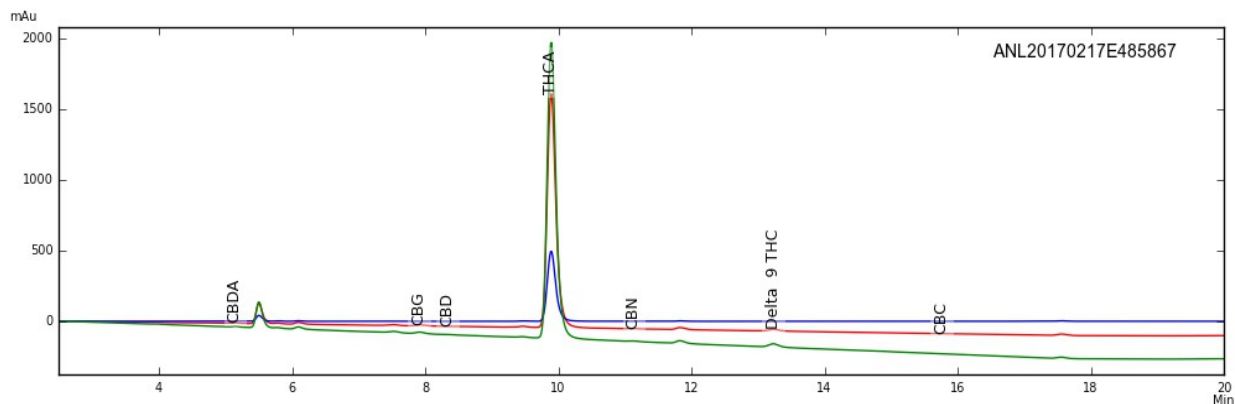


50x



230x

### HPLC Chromatogram



### Cannabinoid Potency

<b>69.95%</b> Delta-9 THC Acid	0.36% CBD-Acid
1.30% Delta-9 THC	0.13% CBD
0.07% CBN	<b>0.45%</b> CBD-Total*
0.66% CBG	0.11% CBC
<b>62.65%</b> Total THC (THC-A x (0.877) + THC)*	
<b>63.93%</b> Total Detected Cannabinoids (Total THC + Total CBD + CBN + CBG + CBC)	

\* Total THC & CBD = content adjusted to account for the change in mass due to decarboxylation



## Certificate of Analysis

Sample: Cookies-N-Kush 6036  
 Date Tested: 2/20/2017  
 Test Result UID: ANL20170217E485867 <http://anl360.co/m/663150>  
 WSLCB Tracking: 6033 5611 9000 6195

Foreign matter inspection: 0 % PASS

### Microbial screen:

Total aerobic plate count	<25 CFUs/gram	PASS
Total yeast and mold count	<25 CFUs/gram	PASS
Bile-tolerant gram negative bacteria count	<25 CFUs/gram	PASS
Coliforms	<25 CFUs/gram	PASS
E. coli	ND	PASS
Salmonella spp.	ND	PASS

### \*Limits

ND= not detected

### Microbial

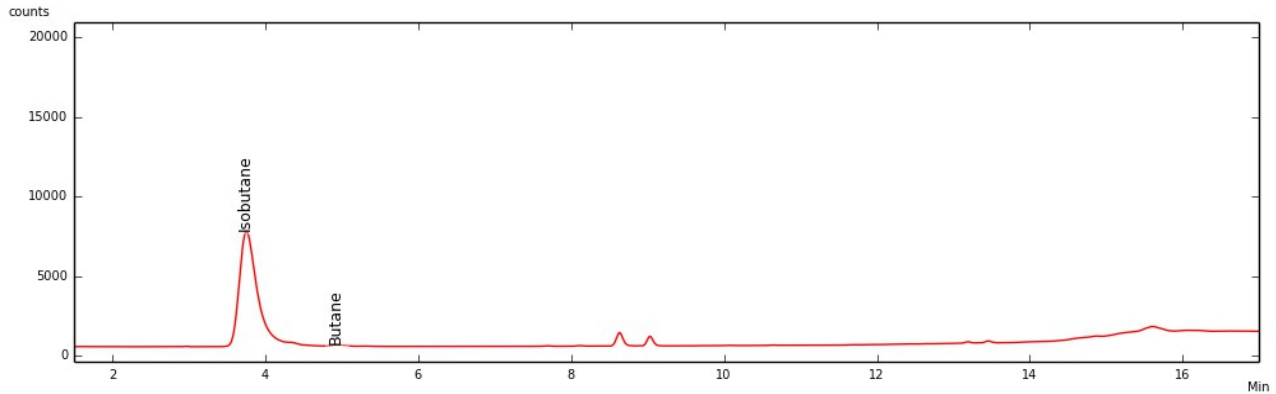
Not to exceed 10,000 Total aerobic plate count, 1,000 Total yeast and mold count, 100 bile-tolerant gram negative bacteria, 100 coliforms, and *E coli* and *Salmonella* not detected in one gram

Approved by: Dr. Paul Matthews



## Certificate of Analysis – Residual Solvent Analysis

Sample: Cookies-N-Kush 6036  
Date Tested: 2/20/2017  
Test Result UID: ANL20170217E485867  
WSLCB Tracking: 6033 5611 9000 6195  
GC Chromatogram



<10 ppm Propane	<10 ppm Pentane
270 ppm Isobutane	<10 ppm Isopropanol
<10 ppm Butane	<10 ppm Hexane
<10 ppm Ethanol	<10 ppm Heptane
<10 ppm Acetone	

**270 TOTAL ppm**

Total Residual Solvents not to exceed 500ppm

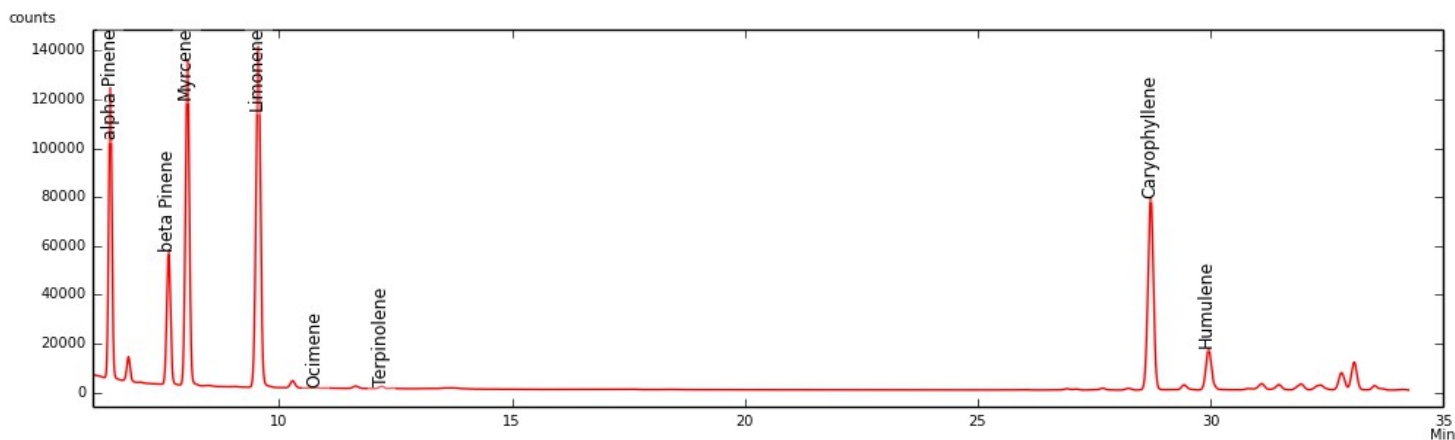
No Hexane or Naphtha may be used in production of concentrates



## Certificate of Analysis

Sample: Cookies-N-Kush 6036  
 Date Tested: 2/20/2017  
 Test Result ID: ANL20170217E485867

### GC-FID Chromatogram



	mg/g	%
α-Pinene	3.521	0.352
β-Pinene	2.591	0.259
Myrcene	9.936	0.994
Limonene	11.296	1.130
Ocimene*	0.000	0.000
Terpinolene	0.073	0.007
Linalool	0.000	0.000
Caryophyllene	40.156	4.016
Humulene	11.815	1.182
<b>Total detected</b>	<b>79.388</b>	<b>7.939</b>

\*compound concentration based on beta Pinene  
 Detection limit of 0.05 mg/g

Approved by: Dr. Paul Matthews