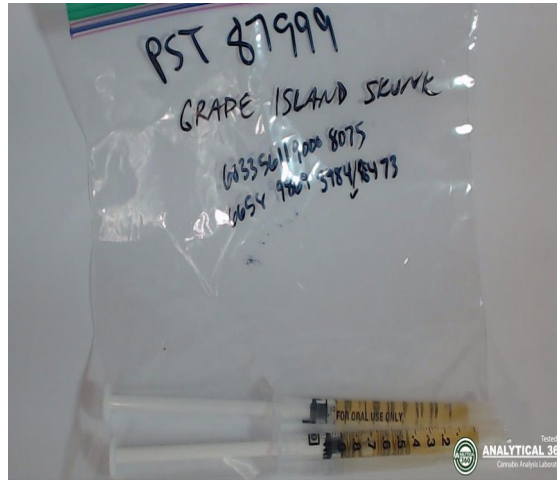




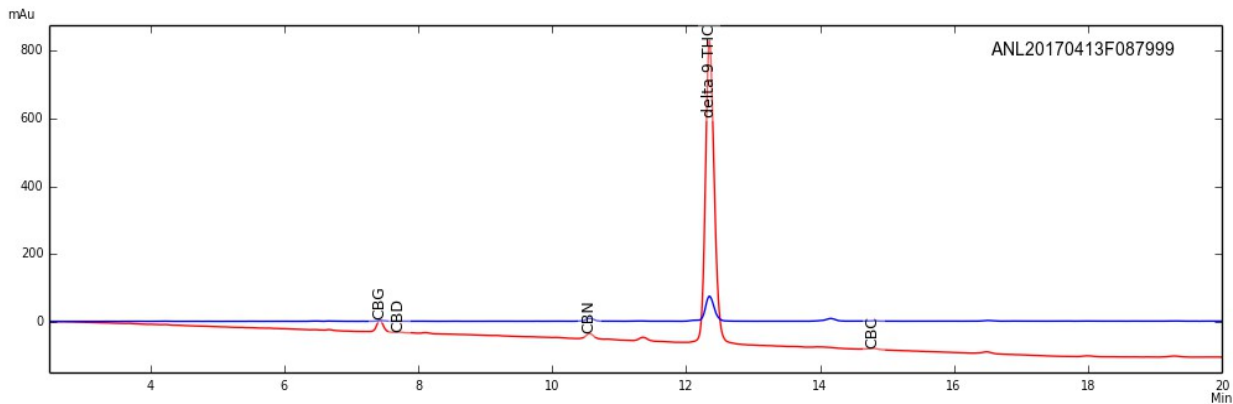
Certificate of Analysis

Sample: Grape Island Skunk 8473
 Date Tested: 4/13/2017
 Test Result UID: ANL20170413F087999 <http://anl360.co/m/685395>
 WSLCB Tracking: 6033 5611 9000 8075

Photographs



HPLC Chromatogram



Cannabinoid Potency

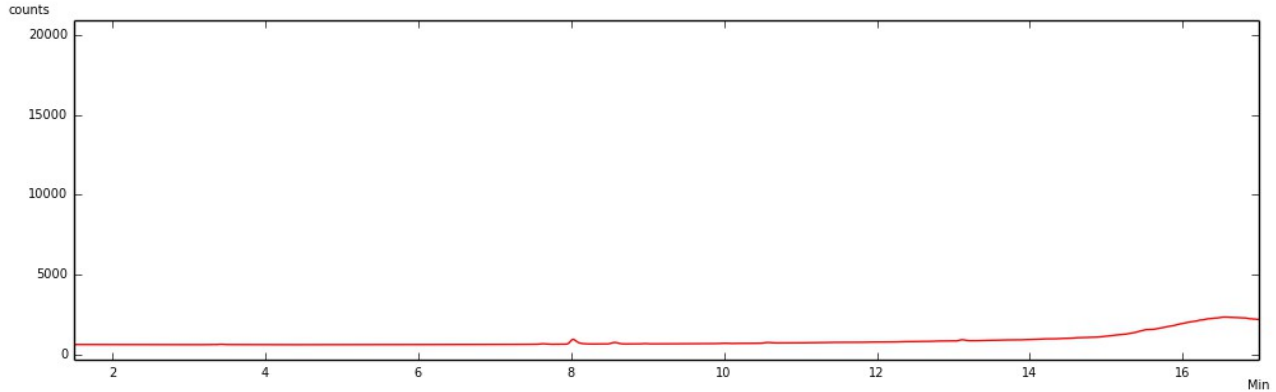
< 0.01% Delta-9 THC Acid	< 0.01% CBD-Acid
90.91% Delta-9 THC	0.46% CBD
0.70% CBN	0.46% CBD-Total*
2.62% CBG	0.44% CBC
90.91% Total THC (THC-A x (0.877) + THC)*	
95.13% Total Detected Cannabinoids (Total THC + Total CBD + CBN + CBG + CBC)	

* Total THC & CBD = content adjusted to account for the change in mass due to decarboxylation



Certificate of Analysis – Residual Solvent Analysis

Sample: Grape Island Skunk 8473
Date Tested: 4/13/2017
Test Result UID: ANL20170413F087999
WSLCB Tracking: 6033 5611 9000 8075
GC Chromatogram



<10 ppm Propane	<10 ppm Pentane
<10 ppm Isobutane	<10 ppm Isopropanol
<10 ppm Butane	<10 ppm Hexane
<10 ppm Ethanol	<10 ppm Heptane
<10 ppm Acetone	

<10 TOTAL ppm

Total Residual Solvents not to exceed 500ppm

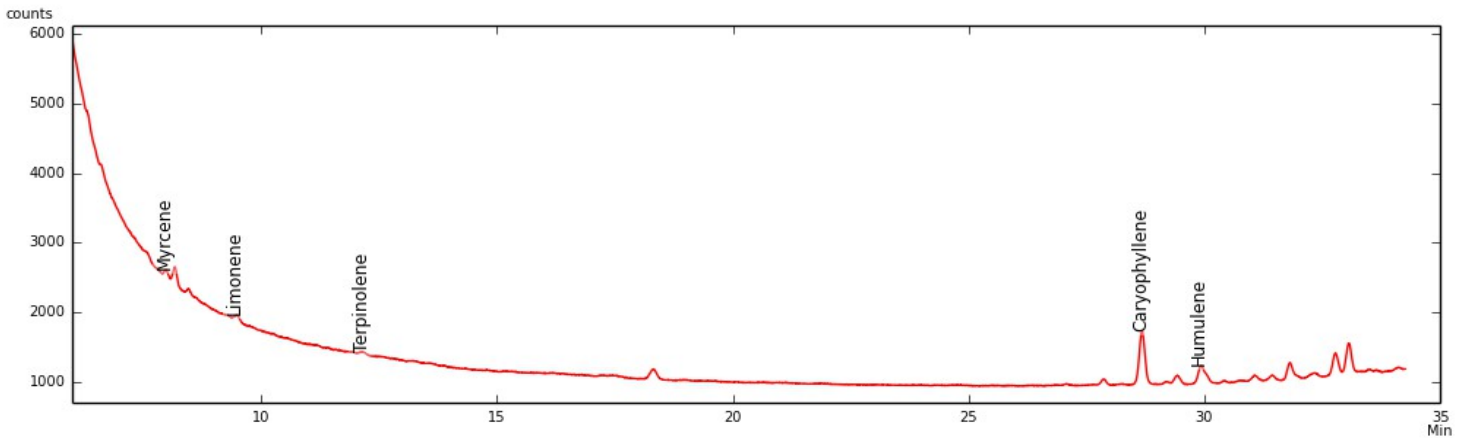
No Hexane or Naphtha may be used in production of concentrates



Certificate of Analysis

Sample: Grape Island Skunk 8473
Date Tested: 4/13/2017
Test Result ID: ANL20170413F087999

GC-FID Chromatogram



	mg/g	%
α-Pinene	0.000	0.000
β-Pinene	0.000	0.000
Myrcene	0.000	0.000
Limonene	0.000	0.000
Ocimene*	0.000	0.000
Terpinolene	0.000	0.000
Linalool	0.000	0.000
Caryophyllene	0.405	0.041
Humulene	0.246	0.025
Total detected	0.651	0.065

*compound concentration based on beta Pinene
Detection limit of 0.05 mg/g

Approved by: Dr. Paul Matthews