



## Certificate of Analysis

Sample: OGRE Kush 9162  
 Date Tested: 5/15/2017  
 Test Result UID: ANL20170515F089327 <http://anl360.co/m/697397>  
 WSLCB Tracking: 6033 5611 9000 9651

### Photographs



25x

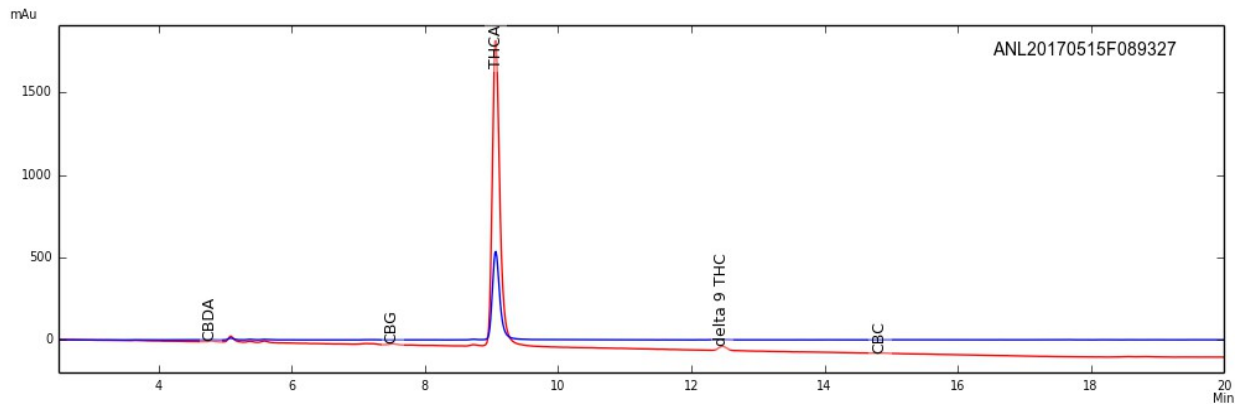


50x



230x

### HPLC Chromatogram



### Cannabinoid Potency

84.78% Delta-9 THC Acid	0.45% CBD-Acid
2.81% Delta-9 THC	< 0.01% CBD
< 0.01% CBN	0.39% CBD-Total*
0.65% CBG	0.22% CBC
<b>77.16% Total THC (THC-A x (0.877) + THC)*</b>	
<b>78.42% Total Detected Cannabinoids (Total THC + Total CBD + CBN + CBG + CBC)</b>	

\* Total THC & CBD = content adjusted to account for the change in mass due to decarboxylation



Tested By

**ANALYTICAL 360**

Cannabis Analysis Laboratory

## Certificate of Analysis

Sample: OGRE Kush 9162  
 Date Tested: 5/15/2017  
 Test Result UID: ANL20170515F089327 <http://anl360.co/m/697397>  
 WSLCB Tracking: 6033 5611 9000 9651

Foreign matter inspection: 0 % PASS

### Microbial screen:

Total aerobic plate count	<25 CFUs/gram	PASS
Total yeast and mold count	20 CFUs/gram	PASS
Bile-tolerant gram negative bacteria count	<25 CFUs/gram	PASS
Coliforms	<25 CFUs/gram	PASS
E. coli	ND	PASS
Salmonella spp.	ND	PASS

### \*Limits

ND= not detected

### Microbial

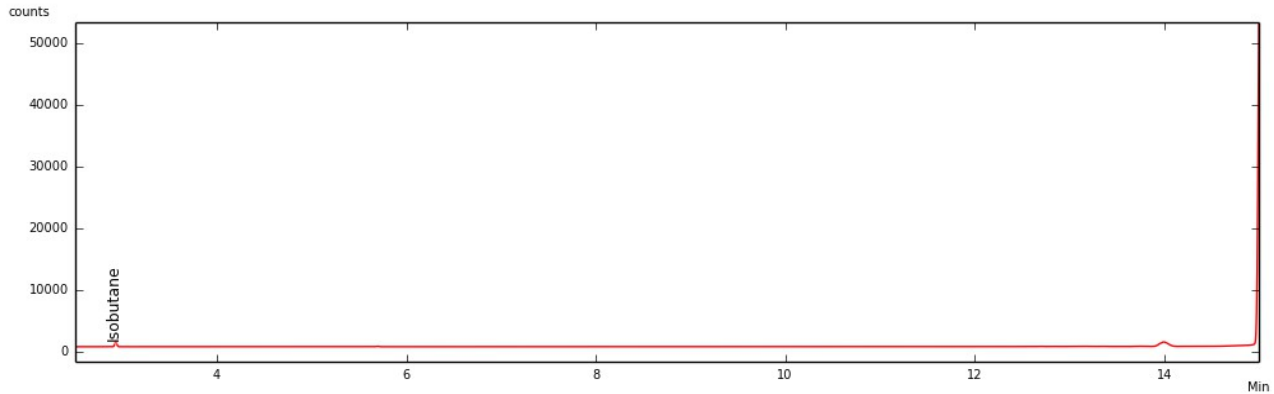
Not to exceed 10,000 Total aerobic plate count, 1,000 Total yeast and mold count, 100 bile-tolerant gram negative bacteria, 100 coliforms, and *E coli* and *Salmonella* not detected in one gram

Approved by: Dr. Paul Matthews



## Certificate of Analysis – Residual Solvent Analysis

Sample: OGRE Kush 9162  
Date Tested: 5/15/2017  
Test Result UID: ANL20170515F089327  
WSLCB Tracking: 6033 5611 9000 9651  
GC Chromatogram



< 2 ppm Propane	< 2 ppm Acetonitrile
103 ppm Isobutane	< 2 ppm Hexane
< 2 ppm Butane	< 2 ppm Chloroform
< 2 ppm Methanol	< 2 ppm Benzene
< 2 ppm Pentane	< 2 ppm Heptane
< 2 ppm Ethanol	< 2 ppm Tolulene
< 2 ppm Acetone	< 2 ppm Total Xylenes*
< 2 ppm Isopropanol	

\*Total Xylenes equal the sum of M,P-xylene, O-xylene & ethyl benzene

**103 TOTAL ppm**

Total Residual Solvents not to exceed 500ppm

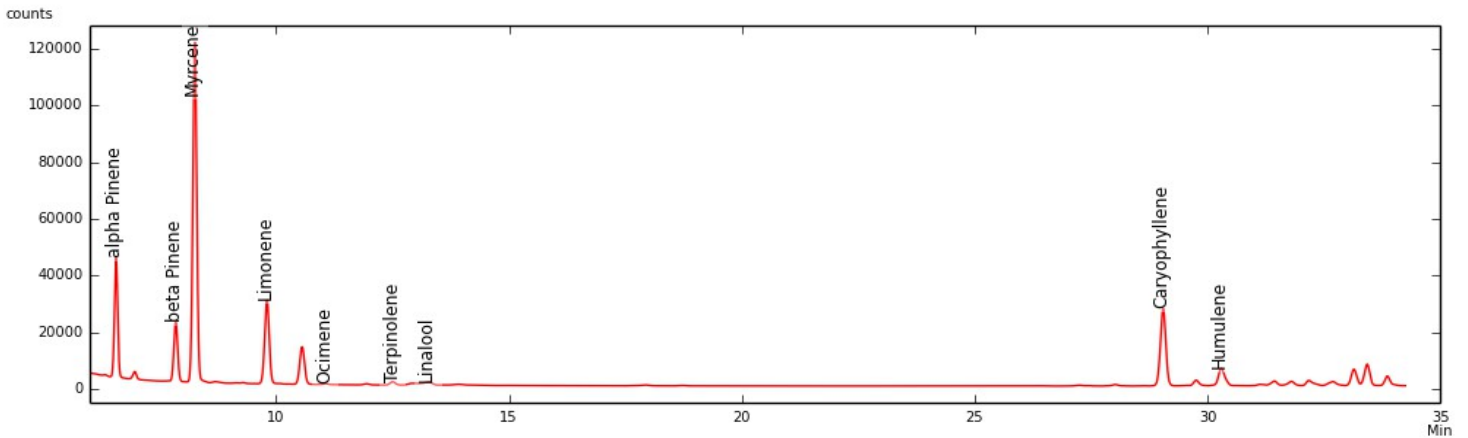
No Hexane or Naphtha may be used in production of concentrates



# Certificate of Analysis

Sample: OGRE Kush 9162  
Date Tested: 5/15/2017  
Test Result ID: ANL20170515F089327

## GC-FID Chromatogram



	mg/g	%
α-Pinene	1.238	0.124
β-Pinene	0.987	0.099
Myrcene	9.017	0.902
Limonene	2.416	0.242
Ocimene*	0.000	0.000
Terpinolene	0.109	0.011
Linalool	4.262	0.426
Caryophyllene	13.828	1.383
Humulene	4.989	0.499
<b>Total detected</b>	<b>36.845</b>	<b>3.685</b>

\* compound concentration based on beta Pinene  
Detection limit of 0.05 mg/g

Approved by: Dr. Paul Matthews