



Certificate of Analysis

Sample: Space Queen 0309
 Date Tested: 5/8/2017
 Test Result UID: ANL20170507D388989 <http://anl360.co/m/694097>
 WSLCB Tracking: 6033 5611 9000 9169

Photographs



25x

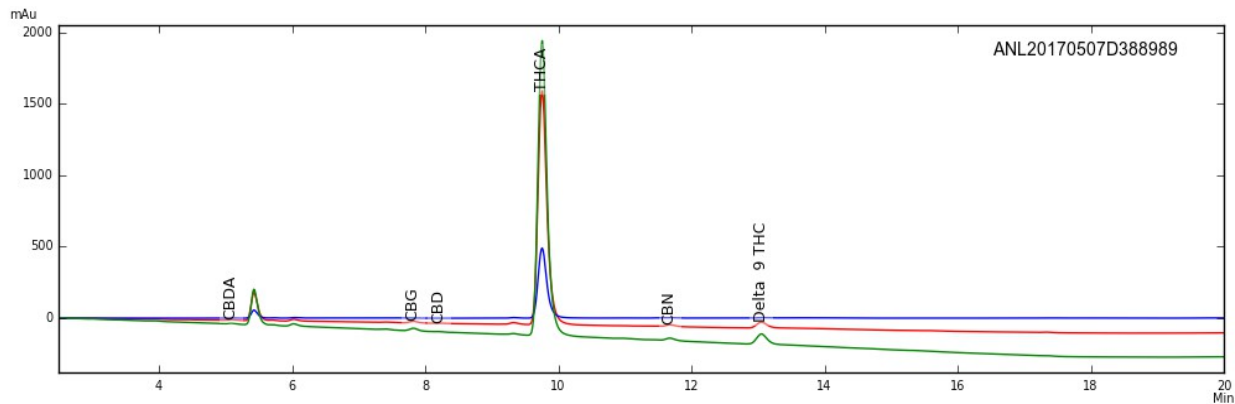


50x



230x

HPLC Chromatogram



Cannabinoid Potency

79.39%	Delta-9 THC Acid	0.35%	CBD-Acid
4.67%	Delta-9 THC	0.35%	CBD
0.55%	CBN	0.66%	CBD-Total*
1.03%	CBG	< 0.01%	CBC
74.30%	Total THC (THC-A x (0.877) + THC)*		
76.53%	Total Detected Cannabinoids (Total THC + Total CBD + CBN + CBG + CBC)		

* Total THC & CBD = content adjusted to account for the change in mass due to decarboxylation



Certificate of Analysis

Sample: Space Queen 0309
 Date Tested: 5/8/2017
 Test Result UID: ANL20170507D388989 <http://anl360.co/m/694097>
 WSLCB Tracking: 6033 5611 9000 9169

Foreign matter inspection: 0 % PASS

Microbial screen:

Total aerobic plate count	<25 CFUs/gram	PASS
Total yeast and mold count	<25 CFUs/gram	PASS
Bile-tolerant gram negative bacteria count	<25 CFUs/gram	PASS
Coliforms	<25 CFUs/gram	PASS
E. coli	ND	PASS
Salmonella spp.	ND	PASS

*Limits

ND= not detected

Microbial

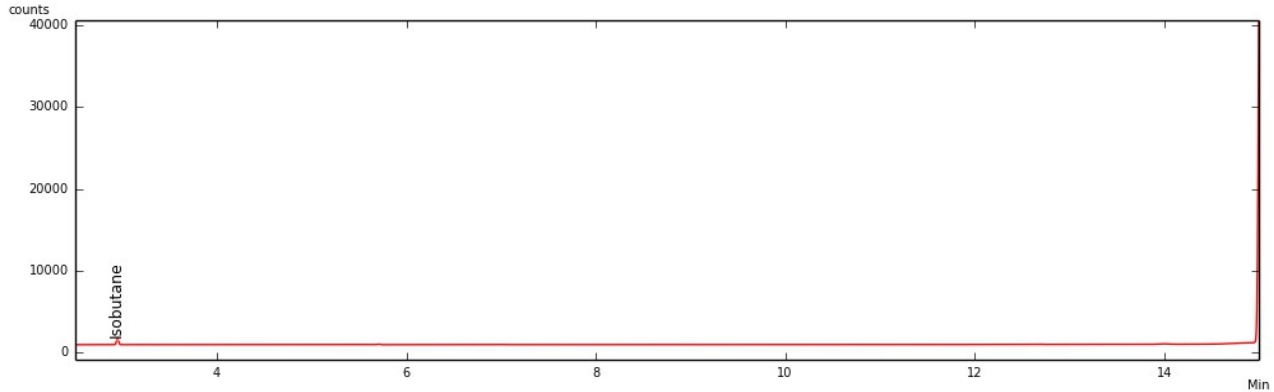
Not to exceed 10,000 Total aerobic plate count, 1,000 Total yeast and mold count, 100 bile-tolerant gram negative bacteria, 100 coliforms, and *E coli* and *Salmonella* not detected in one gram

Approved by: Dr. Paul Matthews



Certificate of Analysis – Residual Solvent Analysis

Sample: Space Queen 0309
Date Tested: 5/8/2017
Test Result UID: ANL20170507D388989
WSLCB Tracking: 6033 5611 9000 9169
GC Chromatogram



- | | |
|---------------------|------------------------|
| < 2 ppm Propane | < 2 ppm Acetonitrile |
| 84 ppm Isobutane | < 2 ppm Hexane |
| < 2 ppm Butane | < 2 ppm Chloroform |
| < 2 ppm Methanol | < 2 ppm Benzene |
| < 2 ppm Pentane | < 2 ppm Heptane |
| < 2 ppm Ethanol | < 2 ppm Tolulene |
| < 2 ppm Acetone | < 2 ppm Total Xylenes* |
| < 2 ppm Isopropanol | |

*Total Xylenes equal the sum of M,P-xylene, O-xylene & ethyl benzene

84 TOTAL ppm

Total Residual Solvents not to exceed 500ppm

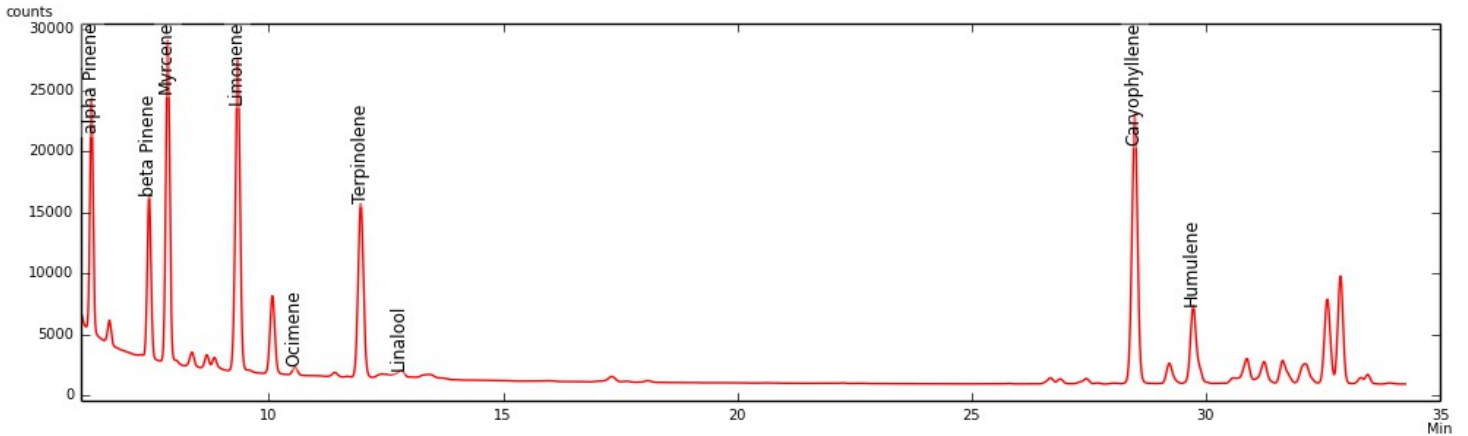
No Hexane or Naphtha may be used in production of concentrates



Certificate of Analysis

Sample: Space Queen 0309
Date Tested: 5/8/2017
Test Result ID: ANL20170507D388989

GC-FID Chromatogram



	mg/g	%
α-Pinene	0.488	0.049
β-Pinene	0.551	0.055
Myrcene	1.791	0.179
Limonene	1.953	0.195
Ocimene*	0.005	0.001
Terpinolene	1.981	0.198
Linalool	2.181	0.218
Caryophyllene	10.681	1.068
Humulene	4.606	0.461
Total detected	24.237	2.424

*compound concentration based on beta Pinene
Detection limit of 0.05 mg/g

Approved by: Dr. Paul Matthews