



Certificate of Analysis

Sample: Space Queen 6389
 Date Tested: 5/15/2017
 Test Result UID: ANL20170515E089326 <http://anl360.co/m/697390>
 WSLCB Tracking: 6033 5611 9000 9650

Photographs



25x

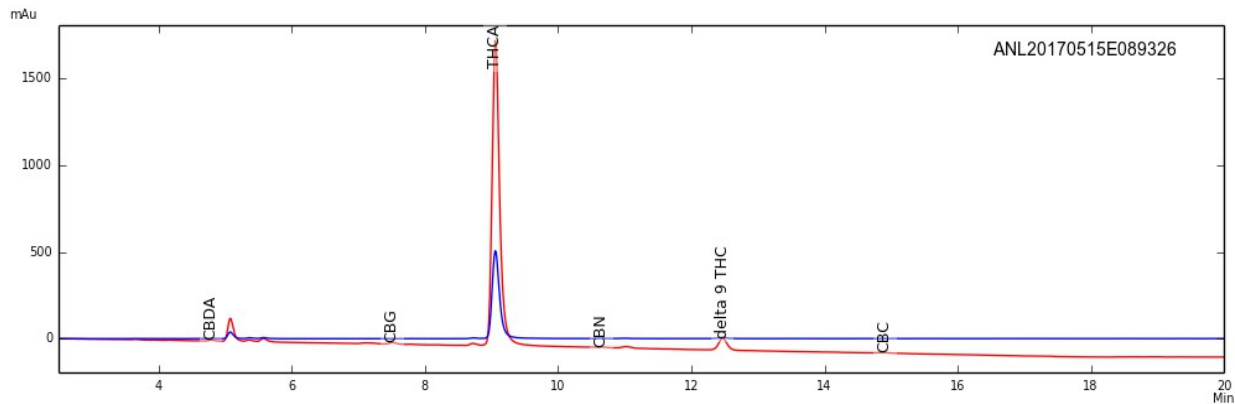


50x



230x

HPLC Chromatogram



Cannabinoid Potency

76.35%	Delta-9 THC Acid	0.48%	CBD-Acid
6.88%	Delta-9 THC	< 0.01%	CBD
0.33%	CBN	0.42%	CBD-Total*
0.76%	CBG	0.35%	CBC
73.84%	Total THC (THC-A x (0.877) + THC)*		
75.70%	Total Detected Cannabinoids (Total THC + Total CBD + CBN + CBG + CBC)		

* Total THC & CBD = content adjusted to account for the change in mass due to decarboxylation



Certificate of Analysis

Sample: Space Queen 6389
 Date Tested: 5/15/2017
 Test Result UID: ANL20170515E089326 <http://anl360.co/m/697390>
 WSLCB Tracking: 6033 5611 9000 9650

Foreign matter inspection: 0 % PASS

Microbial screen:

Total aerobic plate count	<25 CFUs/gram	PASS
Total yeast and mold count	10 CFUs/gram	PASS
Bile-tolerant gram negative bacteria count	<25 CFUs/gram	PASS
Coliforms	<25 CFUs/gram	PASS
E. coli	ND	PASS
Salmonella spp.	ND	PASS

*Limits

ND= not detected

Microbial

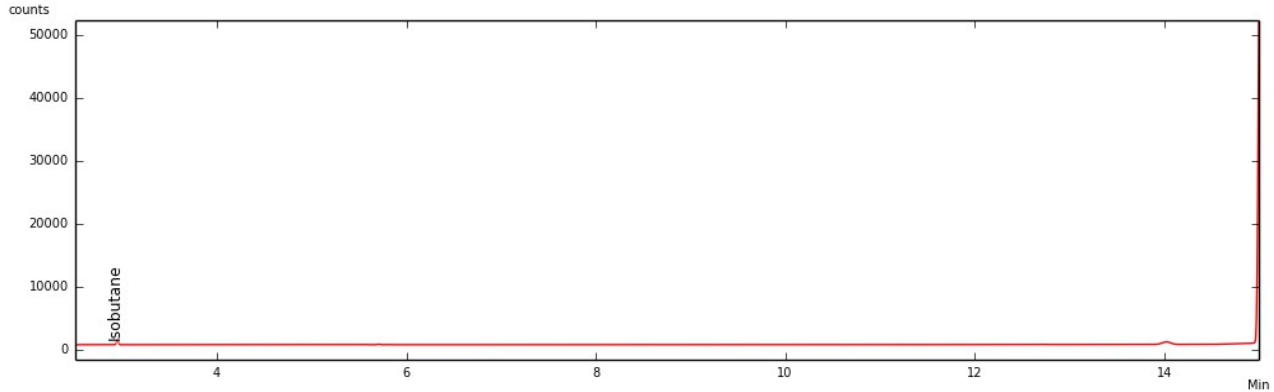
Not to exceed 10,000 Total aerobic plate count, 1,000 Total yeast and mold count, 100 bile-tolerant gram negative bacteria, 100 coliforms, and *E coli* and *Salmonella* not detected in one gram

Approved by: Dr. Paul Matthews



Certificate of Analysis – Residual Solvent Analysis

Sample: Space Queen 6389
Date Tested: 5/15/2017
Test Result UID: ANL20170515E089326
WSLCB Tracking: 6033 5611 9000 9650
GC Chromatogram



- | | |
|---------------------|------------------------|
| < 2 ppm Propane | < 2 ppm Acetonitrile |
| 81 ppm Isobutane | < 2 ppm Hexane |
| < 2 ppm Butane | < 2 ppm Chloroform |
| < 2 ppm Methanol | < 2 ppm Benzene |
| < 2 ppm Pentane | < 2 ppm Heptane |
| < 2 ppm Ethanol | < 2 ppm Toluene |
| < 2 ppm Acetone | < 2 ppm Total Xylenes* |
| < 2 ppm Isopropanol | |

*Total Xylenes equal the sum of M,P-xylene, O-xylene & ethyl benzene

81 TOTAL ppm

Total Residual Solvents not to exceed 500ppm

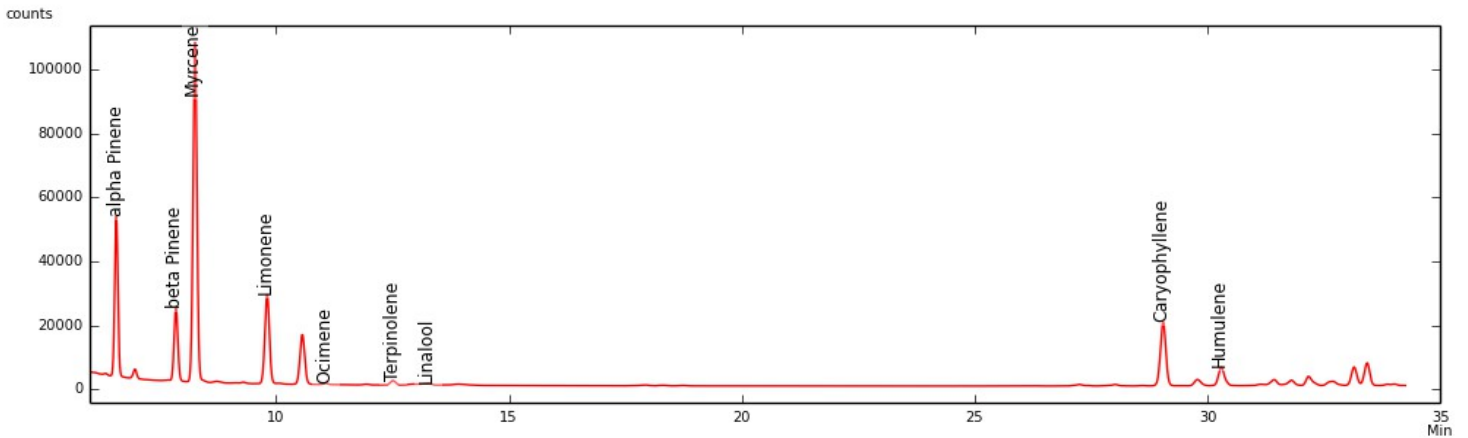
No Hexane or Naphtha may be used in production of concentrates



Certificate of Analysis

Sample: Space Queen 6389
Date Tested: 5/15/2017
Test Result ID: ANL20170515E089326

GC-FID Chromatogram



	mg/g	%
α-Pinene	1.775	0.177
β-Pinene	1.282	0.128
Myrcene	9.575	0.957
Limonene	2.740	0.274
Ocimene*	0.000	0.000
Terpinolene	0.184	0.018
Linalool	2.367	0.237
Caryophyllene	12.213	1.221
Humulene	5.265	0.527
Total detected	35.400	3.540

*compound concentration based on beta Pinene
Detection limit of 0.05 mg/g

Approved by: Dr. Paul Matthews